



## INTERNAL DEBEADERS

# Internal Bead Removal Kit 450mm

The internal bead removal tool is a manual kit for the simple and effective removal of internal beads formed during the butt fusion process. The internal debeader can remove beads from polyethylene pipes in the range 110mm (4" IPS) – 400mm (16" IPS) and 450mm (8" IPS) using optional extra adaptor.

### Whats New

- Aluminium rods replace the previous steel version saving approximately 18kg.
- Shorter 1.2m poles to make transporting and shipping easier and cost effective.
- Robust durable plastic carry case replaces the traditional steel head box saving a further 20kg
- Revamped stainless steel construction heads with clearly identifiable sizes.
- Light easy to carry sections with the poles, drive/tee handle and rods supports supplied in two tough bags which can be stowed flat or in a small space when not in use.
- New adjustable drive handle for aluminium rod kits, works in confined spaces.

### FEATURES

- Rods can be quickly clipped together to de-bead pipe lengths up to 13.2m
- Bead retained in head after removal process for later inspection/archiving
- Robust build quality
- Simple to assemble
- Facilitates quality control procedures from visual bead inspection and bend back test
- Rods and discs supplied in durable easy carry bags
- Heads and ancillary components are housed in a robust carry case
- Designed to meet Gas Industry Standard (GIS/PL2-3)

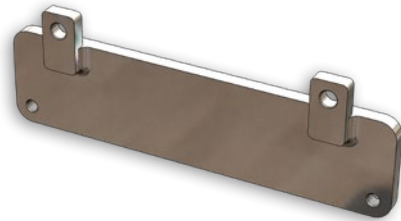
INTERNAL DEBEADERS

# Internal Bead Removal Kit 450mm

Code	Description	Weight (kg)	WxDxH (mm)
IBRTKIT/1.2A	Ø 110-400mm Internal bead removing tool 11 x 1.2m aluminium rods	42.5	N/A
	4 x disc set (bag) 16.5kg	16.5	650 x 340 x 200
	11x 1.2m alu rods & drive handle bag set 16.0kg	16	1300 x 200 x 200
	4 x heads, drive adaptor & hex keys box set 10.0kg	10	425 x 210 x 320
31681	Spare blade for head 1 and 2	0.03	45 x 25 x 6
32187	Spare blade for head 3 and 4	0.05	70 x 25 x 7
91425	Adapter for Ø 450mm SDR11	0.5	225 x 50 x 16
91474	Adapter for Ø 450mm SDR17.6	0.9	225 x 77 x 16
51416	Screw (2 per adaptor required)	0.013	24 x 12 x 12



Tool set up (No.4 head single aluminium rod shown)



Optional extra adaptor for 450mm



Drive handle for aluminium rod kits is adjustable and slides for use in confined spaces



Drive adaptor - joins heads to aluminium rods

**Fusion Equipment Limited**

Smeckley Wood Close, Chesterfield Trading Estate,  
Chesterfield, Derbyshire S41 9PZ, UK

T: +44 (0)1246 264400 | E: sales@fusionequipment.co.uk  
fusionequipment.co.uk



**Fusion  
Equipment**