

# PRODUCTS CATALOGUE

"AT EASE IN YOUR CONSTRUCTION SITE"

[www.ritmo.it](http://www.ritmo.it)





# Ritmo meets all your welding needs in your jobsite



The information and photos in this publication are not binding and RITMO S.P.A. is free to make any alterations without prior notice.

# A DVANTAGE

## RITMO



### **RITMO WORLDWIDE**

Ritmo has professional distributors and resellers all over the world. Our staff is ready to assist you in English, Spanish, French, German, Arab, Italian, Russian and Portuguese.

### **TRAINING**

From many years now, we have decided that the best way to grant a client/distributor a perfect knowledge of our products is to invest in custom training, in our own premises. These courses are aimed to teach how to operate the products in the best way, and how to supply the "first aid" when necessary.

### **PRESALES TECHNICAL ASSISTANCE**

When a client or a potential client wants to buy us a product, it is our standard procedure to help find the best solution to its needs.

### **GLOBAL ADVICE**

In such a technical field as ours, the customer requires the best assistance. Thanks to the experience developed along the years, and to the co-operation with several manufacturers, institutions, schools and training institutes, RITMO is able to give the most comprehensive advice to no matter which related issue. Our company is a long-time member of a UNIPLAST's (UNI-Italian National Plastics Standards Body) working group dedicated to the study and draw up of new standards within our field. The importance of this group is linked to the fact that the expansion of the plastic welding field ought to be followed by a crescent sensitivity for safety issues, so to have a sustainable and continuous growth. The working group prepares draws, hence present them to the UNI to be discussed and eventually transformed into new standards.

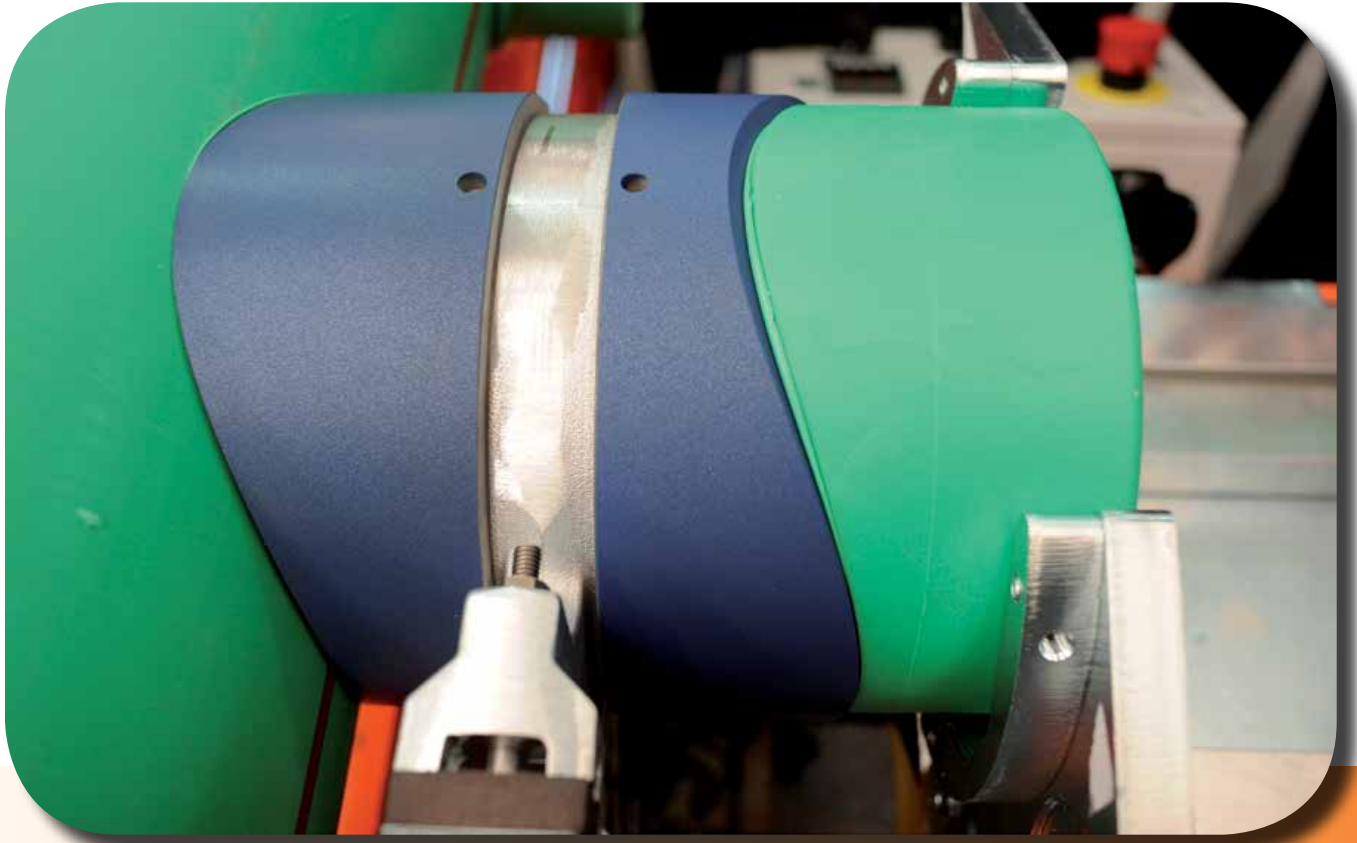
### **AFTER SALES TECHNICAL ASSISTANCE**

Ritmo's Service Centre can solve all kind of technical issues, as well as overhaul our machines. Ritmo has other Service Centres abroad, linked to its official distributors.

### **STARTING AND TESTING**

RITMO' technicians are prepared to make the starting and testing of workshop machines at the client' own premises, so that the fittings production can start almost immediately.

# SOCKET WELDERS



## MANUAL EQUIPMENT

WORKING RANGE Ø mm	16	20	25	32	40	50	63	75	90	110	125
R 25	16	20	25								
R 63	16	20	25	32	40	50	63				
R 125 Q	16	20	25	32	40	50	63	75	90	110	125
WORKING RANGE Ø mm	16	20	25	32	40	50	63	75	90	110	125

## SOCKET FUSION MACHINE

WORKING RANGE Ø mm	20	25	32	40	50	63	75	90	110	125
PRISMA JIG	20	25	32	40	50	63				
PRISMA 90	20	25	32	40	50	63	75	90		
PRISMA 125		25	32	40	50	63	75	90	110	125
PRISMA 125 LIGHT	20	25	32	40	50	63				
						63	75	90	110	125
WORKING RANGE Ø mm	20	25	32	40	50	63	75	90	110	125

 ON REQUEST

## SADDLE SOCKET FUSION MACHINE

WORKING RANGE Ø mm	
FM 630-125	MAIN PIPE 50 ÷ 630 mm SADDLE FITTING 20 ÷ 125 mm



## PRISMA JIG

The PRISMA JIG is a compact socket welding machine for HDPE, PP and PP-R, PVDF, PB OD 20\* ÷ 125 mm (standard composition steel clamps from Ø 63 to 125 mm; on request clamps from Ø 20 to 63 mm). The machine displays a steel frame that can be used as a support to the aligning body; the unit distinguishes itself by being able to work in tight spaces, after a swift releasing manoeuvre of the frame.

The PRISMA JIG has two trolleys, a fixed and a movable one, with practical closing handwheels in order to ensure a perfect grip in between clamp and pipe/fitting. The machine also features steel auto-centering clamps: a special clamp for the fitting, and a couple of paired clamps designed to keep the pipe in position. The trolley closing and opening operations are performed by a “mutual” starter. The special fittings clamp is placed on the fixed trolley. Whenever the type of work requires a different clamping configuration, it is rather easy to unlock and change the machine’s operativeness.

The heating operation is performed by the R 125 Q hand socket welder with TFE fixed temperature control. The main distinctiveness of the TFE device is its security: an acoustic auto-diagnosis alarm indicates when the heating plate has reached the working temperature, but also shuts off the heating plate automatically if any anomaly happens. Thanks to a combined control system, the TFE device responds rather quickly to any temperature fluctuation forced by external causes; on the other hand, it also gives a greater stability, welding precision and reliability in time. A sustaining handle may be placed at the heating plate, in order to simplify the working phases.

The R 125 Q is available in 110 and 230 V. The welding machine is available in two versions, depending on the type of sockets & spigots supplied: Type A and Type B.

### STANDARD COMPOSITION

- Machine body complete with clamps and frame
- R 125 Q TFE hand socket welder
- Socket welder fork support
- Clamps for OD 63-75-90-110-125 mm (A or B type) sockets & spigots
- Transport case for socket welder and sockets & spigots
- Transport case for machine body
- Sustaining handle and tool kit



## TECHNICAL FEATURES

**PLUS**

**CLAMPS  
20 ÷ 63mm  
(on request)**

**WORK  
IN TIGHT SPACES**



Working range	63 ÷ 125 mm standard 20 ÷ 63 mm clamps on request
Materials	HDPE, PP, PP-R, PB, PVDF
Power supply	110 V Single Phase 50/60 Hz 230 V Single Phase 50/60 Hz
Total absorbed power	1400 W
Working temperature	260° (± 10° C) 500° F (± 50° F)
Outside temperature range	-5° ÷ 40° C (23° ÷ 104° F)
Dimensions machine body	400 x 337 x 267 mm 15.7" x 13.3" x 10.5"
Dimensions machine body and frame	400 x 337 x 382 mm 15.7" x 13.3" x 15"
Socket welder	175 x 50 x 395 mm 6.9" x 2" x 15.5"
Transport case Prisma Jig	390 x 350 x 500 mm 15.3" x 13.8" x 19.7"
Transport case Socket welder	490 x 310 x 485 mm
Weight machine body	9,55 Kg (21 lb)
Weight frame Prisma Jig	2,5 Kg (5.5 lb)
Weight Socket welder	3,16 Kg (6,8 lb)





# SOCKET & SPIGOT

These accessories are necessary for the socket fusion of pipes and fittings.

They were designed in accordance to the German standards, for which there are two version, "A" and "B", different in size and welding coupling depths.

## Type A

Ø16 SOCKET & SPIGOT (A)  
 Ø 20 SOCKET & SPIGOT (A)  
 Ø 25 SOCKET & SPIGOT (A)  
 Ø 32 SOCKET & SPIGOT (A)  
 Ø 40 SOCKET & SPIGOT (A)  
 Ø 50 SOCKET & SPIGOT (A)  
 Ø 63 SOCKET & SPIGOT (A)  
 Ø 75 SOCKET & SPIGOT (A)  
 Ø 90 SOCKET & SPIGOT (A)  
 Ø 110 SOCKET & SPIGOT (A)  
 Ø 125 SOCKET & SPIGOT (A)

## Type B

Ø16 SOCKET & SPIGOT (B)  
 Ø 20 SOCKET & SPIGOT (B)  
 Ø 25 SOCKET & SPIGOT (B)  
 Ø 32 SOCKET & SPIGOT (B)  
 Ø 40 SOCKET & SPIGOT (B)  
 Ø 50 SOCKET & SPIGOT (B)  
 Ø 63 SOCKET & SPIGOT (B)  
 Ø 75 SOCKET & SPIGOT (B)  
 Ø 90 SOCKET & SPIGOT (B)  
 Ø 110 SOCKET & SPIGOT (B)  
 Ø 125 SOCKET & SPIGOT (B)

## Type "AQ"

Ø 20 SOCKET & SPIGOT TYPE-AQ  
 Ø 25 SOCKET & SPIGOT TYPE-AQ  
 Ø 32 SOCKET & SPIGOT TYPE-AQ  
 Ø 40 SOCKET & SPIGOT TYPE-AQ  
 Ø 50 SOCKET & SPIGOT TYPE-AQ  
 Ø 63 SOCKET & SPIGOT TYPE-AQ  
 Ø 75 SOCKET & SPIGOT TYPE-AQ  
 Ø 90 SOCKET & SPIGOT TYPE-AQ  
 Ø 110 SOCKET & SPIGOT TYPE-AQ  
 Ø 125 SOCKET & SPIGOT TYPE-AQ

## Saddles socket CTS

Ø ½" CTS SOCKET & SPIGOT  
 Ø ¾" CTS SOCKET & SPIGOT  
 Ø 1" CTS SOCKET & SPIGOT  
 Ø 1¼" CTS SOCKET & SPIGOT

## Saddles socket IPS

Ø ½" IPS SOCKET & SPIGOT  
 Ø ¾" IPS SOCKET & SPIGOT  
 Ø 1" IPS SOCKET & SPIGOT  
 Ø 1¼" IPS SOCKET & SPIGOT  
 Ø 1 ½" IPS SOCKET & SPIGOT  
 Ø 2" IPS SOCKET & SPIGOT  
 Ø 3" IPS SOCKET & SPIGOT  
 Ø 4" IPS SOCKET & SPIGOT

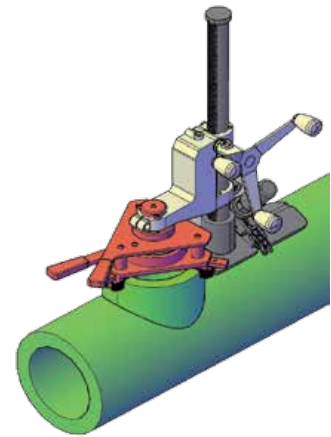
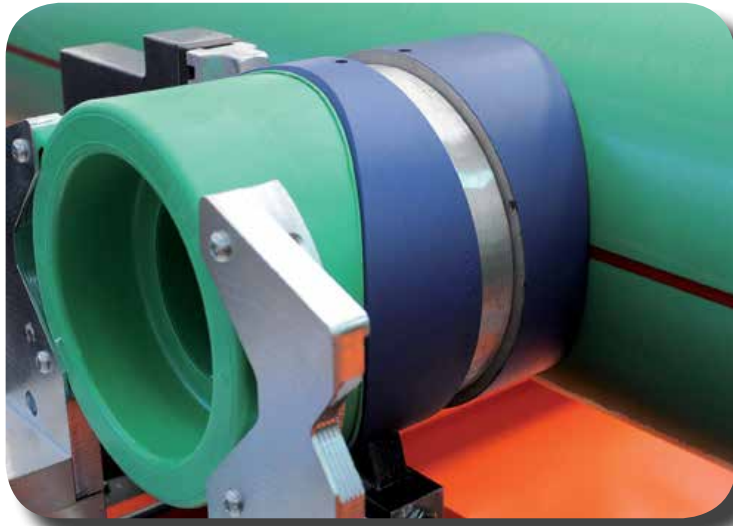
## Hole repairing Sockets and accessories

Ø 7 mm HOLE REPAIRING SOCKET & SPIGOT  
 Ø 8 mm HOLE REPAIRING SOCKET & SPIGOT  
 Ø 11 mm HOLE REPAIRING SOCKET & SPIGOT  
 CLOSING TAPS SET - PE (20 PCS)  
 CLOSING TAPS SET - ORANGE PP (20 PCS)

TYPE A

TYPE B





**PREVIEW**

UP 125 new welding machine for the fabrication of PP-R manifolds on site.

More details: [info@ritmo.it](mailto:info@ritmo.it)

**\* Saddle sockets metric "AQ"**

- Ø 40-20/25 AQ SADDLE SOCKET
- Ø 50-20/25 AQ SADDLE SOCKET
- Ø 63-20/25 AQ SADDLE SOCKET
- Ø 63-32 AQ SADDLE SOCKET
- Ø 75-20/25 AQ SADDLE SOCKET
- Ø 75-32 AQ SADDLE SOCKET
- Ø 75-40 AQ SADDLE SOCKET
- Ø 90-20/25 AQ SADDLE SOCKET
- Ø 90-32 AQ SADDLE SOCKET
- Ø 90-40 AQ SADDLE SOCKET
- Ø 110-20/25 AQ SADDLE SOCKET
- Ø 110-32 AQ SADDLE SOCKET
- Ø 110-40 AQ SADDLE SOCKET
- Ø 110-50 AQ SADDLE SOCKET
- Ø 125-20/25 AQ SADDLE SOCKET
- Ø 125-32 AQ SADDLE SOCKET
- Ø 125-40 AQ SADDLE SOCKET
- Ø 125-50 AQ SADDLE SOCKET
- Ø 125-63 AQ SADDLE SOCKET
- Ø 160-20/25 AQ SADDLE SOCKET
- Ø 160-32 AQ SADDLE SOCKET
- Ø 160-40 AQ SADDLE SOCKET
- Ø 160-50 AQ SADDLE SOCKET
- Ø 160-63 AQ SADDLE SOCKET
- Ø 160-75 AQ SADDLE SOCKET
- Ø 160-90 AQ SADDLE SOCKET
- Ø 200-20/25 AQ SADDLE SOCKET
- Ø 200-50 AQ SADDLE SOCKET
- Ø 200-63 AQ SADDLE SOCKET
- Ø 200-75 AQ SADDLE SOCKET
- Ø 200-90 AQ SADDLE SOCKET
- Ø 200-110 AQ SADDLE SOCKET
- Ø 200-125 AQ SADDLE SOCKET
- Ø 250-50 AQ SADDLE SOCKET
- Ø 250-63 AQ SADDLE SOCKET
- Ø 250-75 AQ SADDLE SOCKET
- Ø 250-90 AQ SADDLE SOCKET
- Ø 250-110 AQ SADDLE SOCKET
- Ø 250-125 AQ SADDLE SOCKET

**\* Saddle sockets metric "N"**

- Ø 40-20/25 N SADDLE SOCKET
- Ø 50-20/25 N SADDLE SOCKET
- Ø 63-20/25 N SADDLE SOCKET
- Ø 63-32 N SADDLE SOCKET
- Ø 75-20/25 N SADDLE SOCKET
- Ø 75-32 N SADDLE SOCKET
- Ø 75-40 N SADDLE SOCKET
- Ø 90-20/25 N SADDLE SOCKET
- Ø 90-32 N SADDLE SOCKET
- Ø 90-40 N SADDLE SOCKET
- Ø 90-50 N SADDLE SOCKET
- Ø 110-20/25 N SADDLE SOCKET
- Ø 110-32 N SADDLE SOCKET
- Ø 110-40 N SADDLE SOCKET
- Ø 110-50 N SADDLE SOCKET
- Ø 110-63 N SADDLE SOCKET
- Ø 125-20/25 N SADDLE SOCKET
- Ø 125-32 N SADDLE SOCKET
- Ø 125-40 N SADDLE SOCKET
- Ø 125-50 N SADDLE SOCKET
- Ø 125-63 N SADDLE SOCKET
- Ø 160-20/25 N SADDLE SOCKET
- Ø 160-32 N SADDLE SOCKET
- Ø 160-40 N SADDLE SOCKET
- Ø 160-50 N SADDLE SOCKET
- Ø 160-63 N SADDLE SOCKET
- Ø 200-20/25 N SADDLE SOCKET
- Ø 200-32 N SADDLE SOCKET
- Ø 200-40 N SADDLE SOCKET
- Ø 200-50 N SADDLE SOCKET
- Ø 200-63 N SADDLE SOCKET
- Ø 250-20/25 N SADDLE SOCKET
- Ø 250-32 N SADDLE SOCKET
- Ø 250-40 N SADDLE SOCKET
- Ø 250-50 N SADDLE SOCKET
- Ø 250-63 N SADDLE SOCKET
- Ø 315-32 N SADDLE SOCKET
- Ø 315-40 N SADDLE SOCKET
- Ø 315-50 N SADDLE SOCKET
- Ø 315-63 N SADDLE SOCKET

\* Contact RITMO S.P.A. for more details



**RITMO S.p.A.**  
Via A. Volta, 35/37 - 35037  
Bresseo di Teolo (PADOVA) ITALY

Ph. +39 049 9901888  
Fax +39 049 9901993

[info@ritmo.it](mailto:info@ritmo.it)  
[www.ritmo.it](http://www.ritmo.it)

