

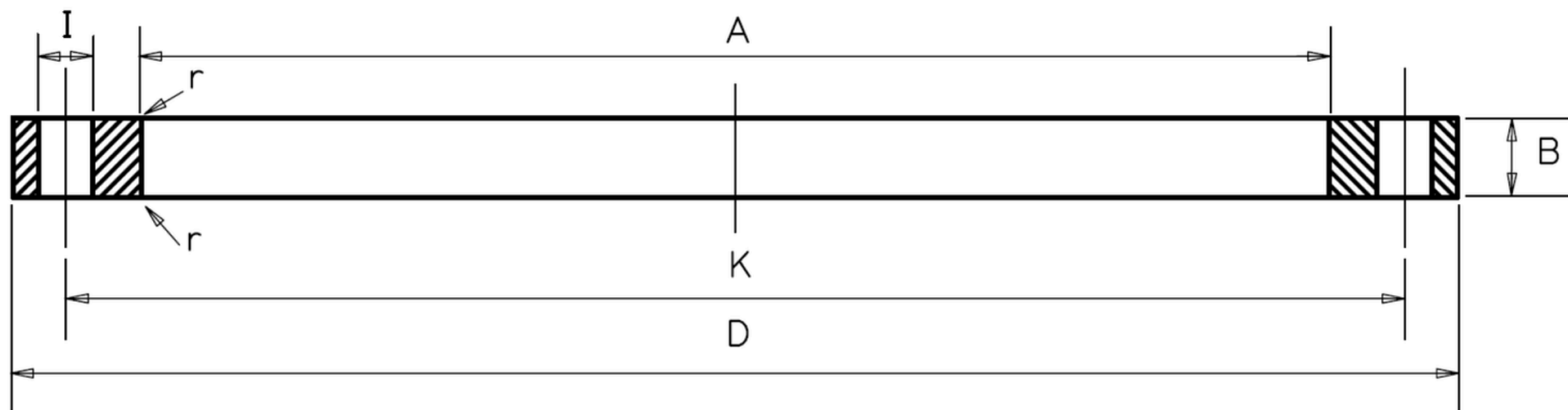
## Stainless Steel Backing Rings

Drilling / Size : DIN PN16



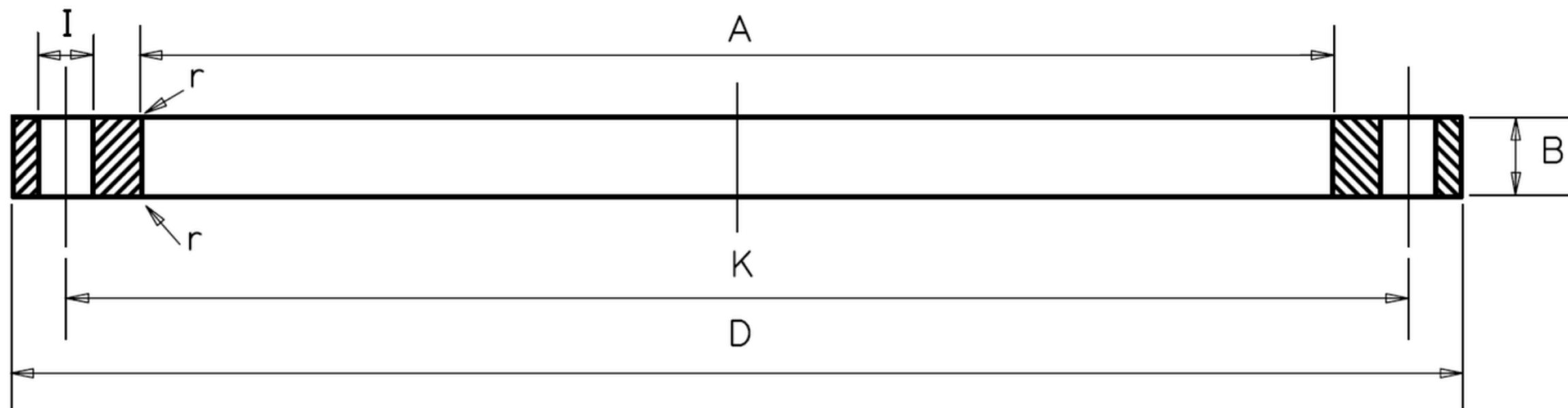
Material	
Body :	316 Grade Stainless steel

**E & OE :** To the best of our knowledge, all information and dimensions supplied in this document are correct. However, we cannot be held responsible for any errors or omissions within the document, and would ask that you always check any information is correct before using.



Code	d mm	DN mm	D	A	K	B	I	No. Holes
WFSB020015SS	20	15	95	28	65	8	14	4
WFSB025020SS	25	20	105	34	75	8	14	4
WFSB032025SS	32	25	115	42	85	8	14	4
WFSB040032SS	40	32	140	51	100	8	18	4
WFSB050040SS	50	40	150	62	110	8	18	4
WFSB063050SS	63	50	165	78	125	10	18	4
WFSB075065SS	75	65	185	92	145	10	18	4
WFSB090080SS	90	80	200	110	160	10	18	8
WFSB110100SS	110	100	220	128	180	10	18	8
WFSB125100SS	125	100	220	135	180	10	18	8
WFSB140125SS	140	125	250	158	210	10	18	8

Code	d mm	DN mm	D	A	K	B	I	No. Holes
WFSB160150SS	160	150	285	178	240	10	22	8
WFSB180150SS	180	150	285	186	240	10	22	8
WFSB200200SS	200	200	340	235	295	10	22	12
WFSB225200SS	225	200	340	238	295	10	22	12
WFSB250250SS	250	250	405	288	355	15	26	12
WFSB280250SS	280	250	405	294	355	15	26	12
WFSB315300SS	315	300	460	338	410	15	26	12
WFSB355350SS	355	350	520	375	470	20	26	16
WFSB400400SS	400	400	580	430	525	25	30	16
WFSB450450SS	450	450	640	490	585	25	30	20
WFSB500500SS	500	500	715	535	650	30	33	20
WFSB560600SS	560	600	840	620	770	42	36	20
WFSB630600SS	630	600	840	645	770	44	36	20
WFSB710700SS	710	700	910	740	840	50	36	24
WFSB800800SS	800	800	1025	843	950	56	39	24
WFSB900900SS	900	900	1125	947	1050	62	39	28
WFSB10001000SS	1000	1000	1255	1050	1170	68	42	28
WFSB12001200SS	1200	1200	1485	1260	1390	76	48	32



Woodside Fusion Ltd.

Woodside House, 4 Brooklands Way, Dinnington, Sheffield, S25 2JZ

T: +44 (0)1909 499499 | E: sales@woodside.uk [woodside.uk](http://woodside.uk)

**Woodside**  
FUSION LTD